

Overview

Industry:
Automotive

Focus:
Civil / structural
engineering for
installation of new
die cast machines
and crane runways

Crossmember Die Cast Installation

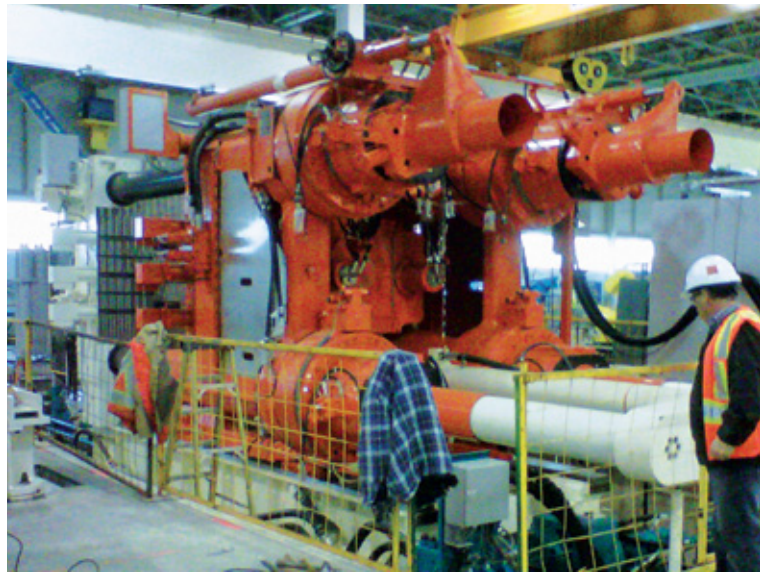
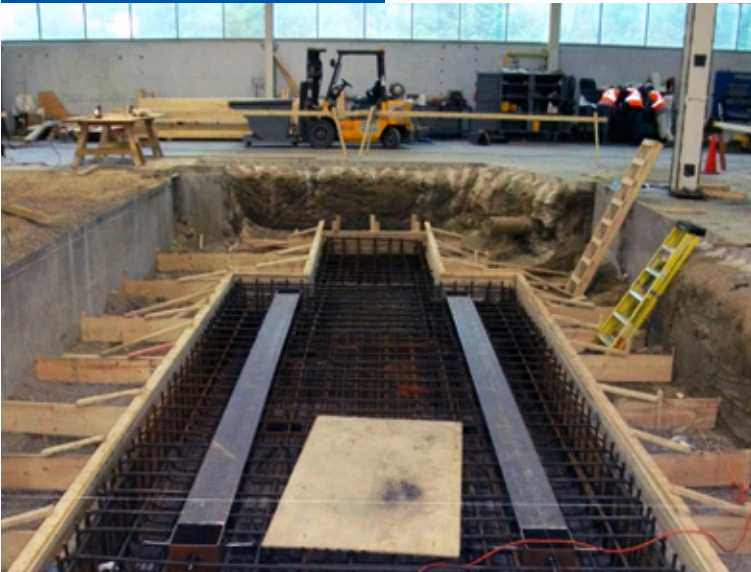
Chrysler Canada

JNE was retained to provide civil / structural engineering services for a design-build project to expand the Chrysler Canada Etobicoke Casting Plant capabilities. The project was part of Chrysler's Crossmember Program and centered on the installation of three new 3500 ton die-cast machines to produce front and rear crossmember castings. The project also included the installation of two new 35 tonne traveling bridge cranes in adjacent building aisles to service the new the die cast machines and the die repair area.

JNE provided detail engineering for the new die cast machine foundations and pits, new service trenches feeding the machine pits, the new crane runways, and the new crane runway foundations in a short time period in order to meet the tight project schedule.

The project was completed entirely within the existing Casting Plant, and unique challenges were presented to the design team in accommodating stringent layout requirements for new and existing processes. JNE's team developed innovative solutions in the design of the new crane runways, foundations, and machine pits in order to maximize the accessible floor area and minimize the structural design requirements and modifications to the existing structure.

JNE successfully completed the design on schedule, ensuring that construction could be completed within the required time frame.



JNE Consulting